

Rubber connector SCHUKO

1479040



General information

Item number	1479040
Model	Rubber connector
Colour	red

Electrical parameters

Amperage	16A
Voltage	250V
Poles	2P + PE

Standards/Directives

According to	DIN VDE 0620
Standard	SCHUKO
Certification marks	ERC

Operating conditions

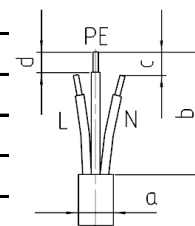
Storage temperature	-25°C to +70°C
Operating temperature	-25°C to +40°C
Relative humidity	5 to 95%, no condensation
Degree of protection	IP20

Materials

Contact Carrier	PA
Housing	Rubber

Connecting cable

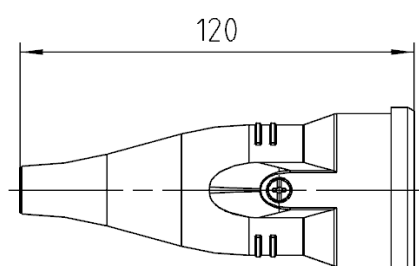
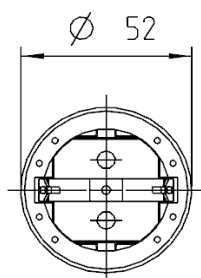
Cross section	3x1,0mm ² -3x1,5mm ²
Cable diameter, dimension a	6-10,4mm
Insulation strip length sheath, dimension b	42-44mm
Trim L/N, dimension c	8mm
Insulation strip length cores, dimension d	8-10mm



Connection screws

Max. torque for screws L-N/PE	0,5 Nm
Screw drive L-N/PE	Combined slot/PZ1
Max. torque for screws housing	1,2 Nm
Screw drive housing	Combined slot/PZ2
Max. torque for screws strain relief	0,5 Nm
Screw drive strain relief	Combined slot/PZ1

Subject to modifications



If the application requires extended specifications, we recommend to test the application under real or simulated conditions. Parameters like duration, quantity and temperature will effect the result significantly